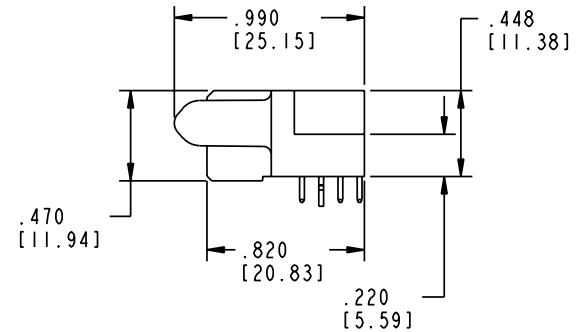
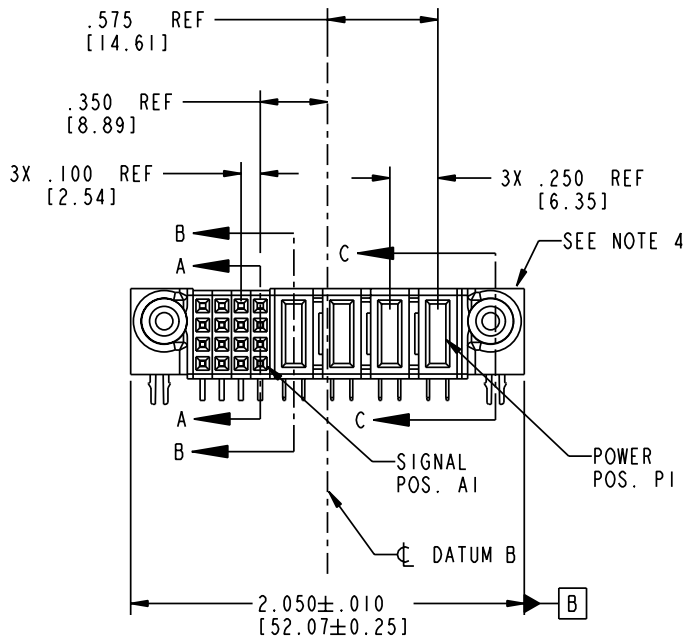
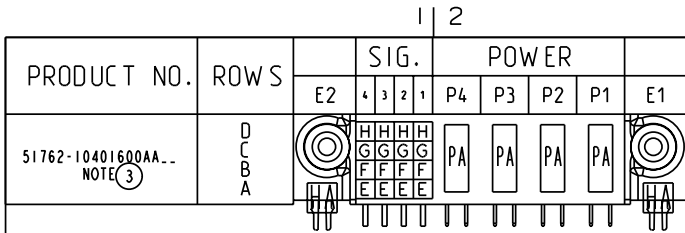


Tous droits strictement réservés. Reproduction ou communication o des liers interdire sous quelque forme que ce soit sans autorisation écrite du propriétaire. Propriete de c FCI. Droits de reproduction FCI.

All rights strictly reserved. Reproduction or issue to third parties in any form whatever is not permitted without written authority from the proprietor. Property of FCI. Copyright FCI.

**FCI**



CODE	DIM "M" MATING LENGTH	CONTACT TYPE
PA	.042 [1.07]	POWER
H	N/A [N/A]	SIGNAL
G	N/A [N/A]	SIGNAL
F	N/A [N/A]	SIGNAL
E	N/A [N/A]	SIGNAL
HA	N/A [N/A]	HOLD-DOWN

mat'l code				tolerances unless otherwise specified		CUSTOMER	
lir	ecn no.	dr	date	linear	.XX±.01/0.X±0.3	COPY	
A	V03-1013	MEM	9/8/03	angles	.XXX±.005/0.XX±0.13	projection	
B	DG05-0037	SW	03/01/05		.XXX±.0020/0.XXX±0.051	INCH/MM	
				dr	M. MOSTOLLER 9/8/03	scale	
				enrg	M. MOSTOLLER 9/8/03	1:1	
				chr	H. BREWBAKER 9/8/03		
				appd	M. MOSTOLLER 9/8/03		
sheet index	revision sheet	B 1	B 2	B 3	B 4		

product family		code	
PwrBlade		213	
size	dwg no	sheet	of 4
A	51762-10401600AA	1	4

Pro/E

PDM: Rev: B

STAT: Released

Printed: Aug 14, 2007

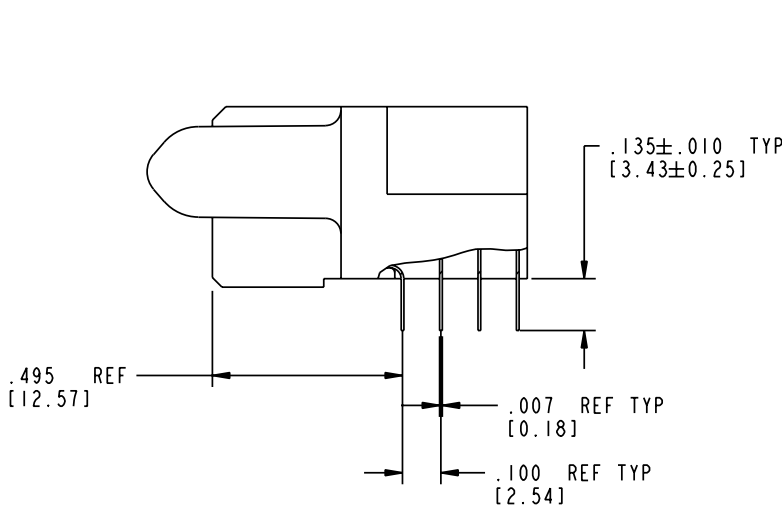
Tous droits strictement réservés. Reproduction ou communication a des tiers interdite sous quelque forme que ce soit sans autorisation écrite du propriétaire. Propriété de c FCI. Droits de reproduction FCI.

All rights strictly reserved. Reproduction or issue to third parties in any form whatever is not permitted without written authority from the proprietor. Property of FCI. Copyright FCI.

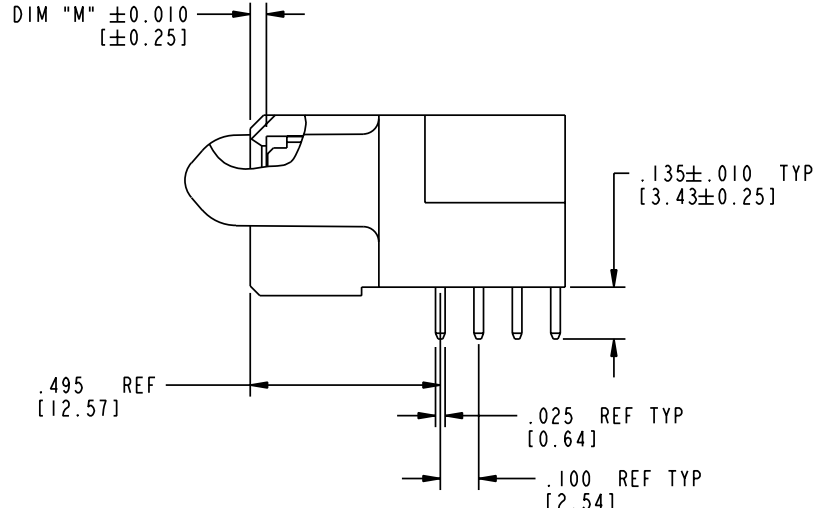
**FCI**

PRODUCT NUMBER

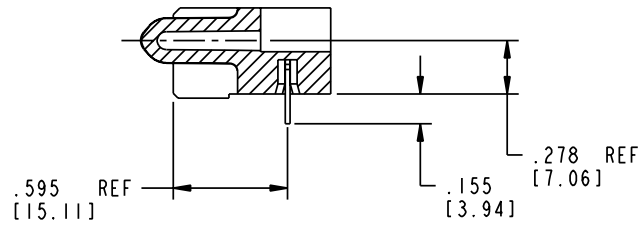
**51762-10401600AA..**  
NOTE (3)




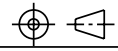
BROKEN-OUT SECTION A-A  
SCALE 2:1



BROKEN-OUT SECTION B-B  
SCALE 2:1



SECTION C-C

mat'l code		SEE NOTE 2		tolerances unless otherwise specified		CUSTOMER		 www.fciconnect.com	
lfr	ecn no.	dr	date	linear	.XX±.01/0.X±0.3	projection	title		
B					.XXX±.005/0.XX±0.13		4P + 16S		
				angles	.XXX±.0020/0.XXX±0.051	INCH/MM	R/A SOLDER RECEPTACLE		
				dr	0°±2°	scale	product family	PwrBlade	code
				engr	M. MOSTOLLER 9/8/03	1:1	size	dwg no	213
				chr	H. BREWBAKER 9/8/03		A	<b>51762-10401600AA</b>	sheet
				appd	M. MOSTOLLER 9/8/03				2 of 4
sheet index	revision sheet								

Pro/E

PDM: Rev: B

STAT: ~~Released~~ **23526**

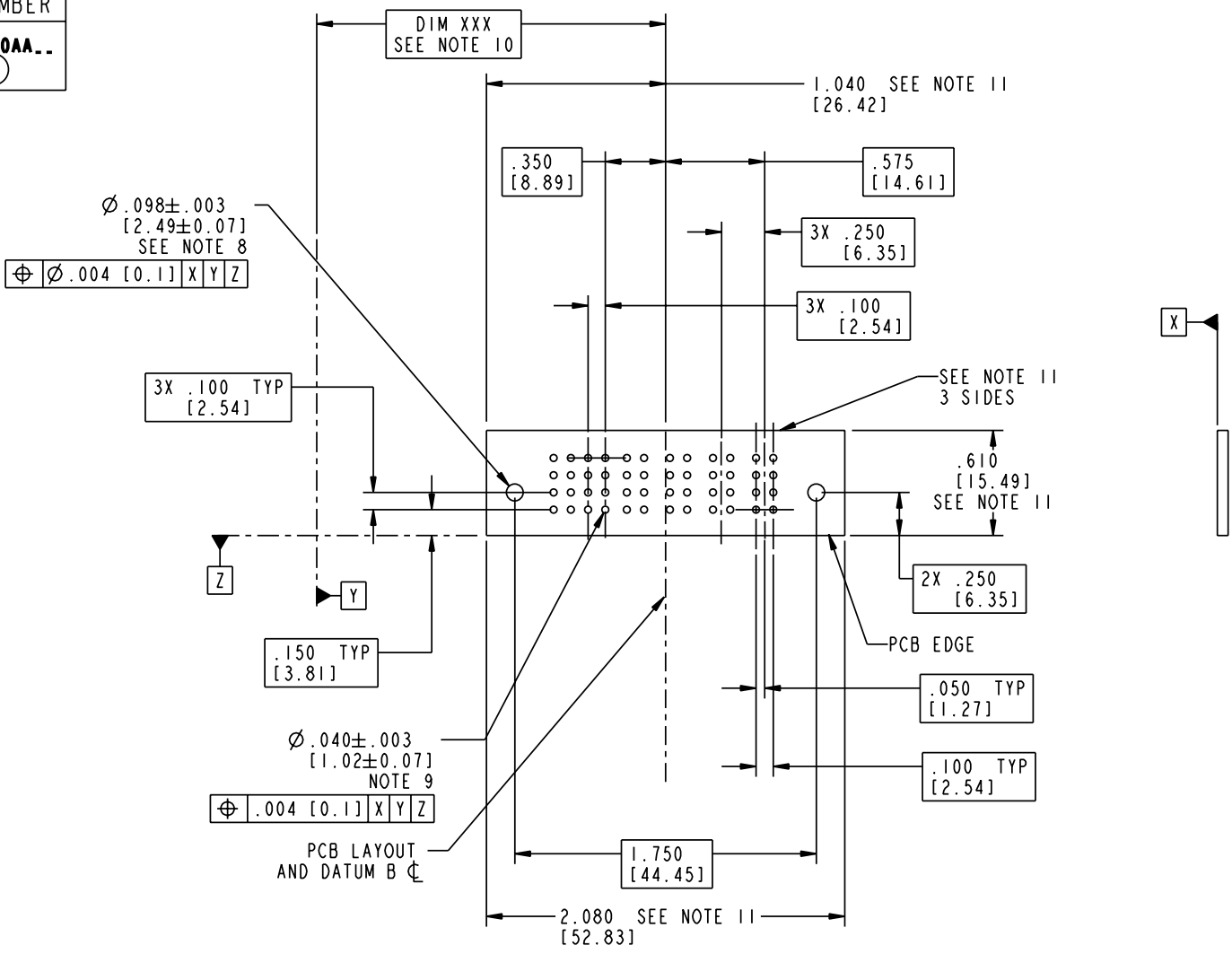
Printed: Aug 14, 2007

Tous droits strictement réservés. Reproduction ou communication a des tiers interdite sous quelque forme que ce soit sans autorisation écrite du propriétaire. Propriété de c FCI. Droits de reproduction FCI.

All rights strictly reserved. Reproduction or issue to third parties in any form whatever is not permitted without written authority from the proprietor. Property of FCI. Copyright FCI.

**FCI**

PRODUCT NUMBER  
**51762-10401600AA...**  
 NOTE ③



mat'l code		SEE NOTE 2		tolerances unless otherwise specified		CUSTOMER		 www.fciconnect.com	
lfr	ecn no.	dr	date	linear	.XX±.01/0.X±0.3	projection	title		
B					.XXX±.005/0.XX±0.13		<b>4P + 16S</b> <b>R/A SOLDER RECEPTACLE</b>		
				angles	.XXX±.0020/0.XXX±0.051		product family		code
				dr	0°±2°	scale	PwrBlade		213
				enrg	M. MOSTOLLER 9/8/03	1:1	size	dwg no	sheet
				chr	M. MOSTOLLER 9/8/03		<b>51762-10401600AA</b>		3 of 4
				appd	H. BREWBAKER 9/8/03				
sheet index	revision sheet								

Pro/E

PDM: Rev: B

STAT: Released 22526

Printed: Aug 14, 2007

PRODUCT NUMBER

51762-10401600AA...  
NOTE (3)

NOTES:

1. DIMENSIONS AND TOLERANCES ARE IN ACCORDANCE WITH ASME Y14.5M, 1994 UNLESS OTHERWISE SPECIFIED.

CONNECTOR NOTES:

(2) HOUSING MATERIAL: UL 94 V-0 GLASS FILLED HIGH-TEMP THERMOPLASTIC  
POWER CONTACT MATERIAL: COPPER ALLOY  
SIGNAL PIN MATERIAL: COPPER ALLOY

3. PLATING:  
51762-10401600AA SIGNAL PINS: 30u"/0.76um Au OVER 50u"/1.27um Ni ON CONTACT AREA  
100u"/2.54um SnPb OVER 50u"/1.27um Ni ON TERMINATION AREA  
POWER CONTACTS: 50u"/1.27um Ni UNDER ALL WITH 30u"/0.76um Au ON CONTACT AREA AND 100u"/2.54um SnPb ON PCB INTERFACE

51762-10401600AALF SIGNAL PINS: 30u"/0.76um Au OVER 50u"/1.27um Ni ON CONTACT AREA  
78u"/2.00um Sn OVER 50u"/1.27um Ni ON Ni TERMINATION AREA  
POWER CONTACTS: 50u"/1.27um Ni UNDER ALL WITH 30u"/0.76um Au ON CONTACT AREA AND 78u"/2.00um Sn ON PCB INTERFACE

PART NUMBER 51762-10401600AALF MEETS EUROPEAN UNION DIRECTIVE AND OTHER COUNTRY REGULATIONS AS DESCRIBED IN GS-22-008.

(4) MANUFACTURER'S NAME, P/N, AND DATE CODE TO APPEAR ON THIS SURFACE.

5. PRODUCT SPECIFICATION GS-12-149.  
APPLICATION SPECIFICATION BUS-20-067.

6. PACKAGED IN TRAYS.

PCB NOTES:

7. ALL HOLE DIAMETERS ARE FINISHED HOLE SIZE.

(8) MOUNTING HOLES, WHERE APPLICABLE, ARE UNPLATED.

(9)  $\varnothing .0453 \pm .0010$  [1.151  $\pm$  0.025] DRILLED HOLES PLATED WITH .0003 [0.008] MIN SnPb OVER .001 [0.03] TO .003 [0.08] Cu PLATING TO ACHIEVE  $\varnothing .040 \pm .003$  [1.02  $\pm$  .07] HOLE.

(10) "DIM XXX" TO BE DETERMINED BY THE CUSTOMER.

(11) CONNECTOR KEEP-OUT ZONE.

mat'l code		SEE NOTE 2		tolerances unless otherwise specified		CUSTOMER		A FCI www.fciconnect.com	
lfr	ecn no.	dr	date	linear	.XX $\pm$ .01 / 0.X $\pm$ 0.3	COPY		title	
B				projection	.XXX $\pm$ .005 / 0.XX $\pm$ 0.13	INCH/MM		4P + 16S R/A SOLDER RECEPTACLE	
				angles	.XXX $\pm$ .002 / 0.XXX $\pm$ 0.051	scale		product family	
				dr	0° $\pm$ 2°	1:1		PwrBlade	
				enrg	M. MOSTOLLER 9/8/03	A		code	
				chr	M. MOSTOLLER 9/8/03	size		213	
				appd	H. BREWBAKER 9/8/03	dwg no		sheet	
					M. MOSTOLLER 9/8/03	51762-10401600AA		4 of 4	
sheet index	revision sheet								

Tous droits strictement reserves. Reproduction ou communication a des tiers interdite sous quelque forme que ce soit sans autorisation ecrite du proprietaire. Propriete de c FCI. Droits de reproduction FCI.

A  
FCI

All rights strictly reserved. Reproduction or issue to third parties in any form whatever is not permitted without written authority from the proprietor. Property of FCI. Copyright FCI.

B

B